



测试报告

No. SHAEC1107022703

日期: 2011年05月19日 第1页,共4页


昆山市群展电子科技有限公司

昆山经济开发区蓬朗六时泾路西侧、洪湖路北侧

以下测试之样品是由申请者所提供及确认: 铅箔

SGS工作编号: SP11-014554 - SH  
 型号: 1050(1145)  
 样品接收日期: 2011年05月16日  
 测试周期: 2011年05月16日 - 2011年05月19日  
 测试要求: 根据客户要求测试  
 测试方法: 请参见下一页  
 测试结果: 请参见下一页  
 结论: 基于所送样品进行的测试, 测试结果与欧盟RoHS指令2002/95/EC以及后续修正指令的要求相符

通标标准技术服务有限公司  
授权签名



Fan Jingjie, JJ范品捷  
批准签署人

This document is issued by the Company subject to its General Conditions of Service printed overleaf, available on request or accessible at [http://www.sgs.com/terms\\_and\\_conditions.htm](http://www.sgs.com/terms_and_conditions.htm) and, for electronic format documents, subject to Terms and Conditions for Electronic Documents at [www.sgs.com/terms\\_e-document.htm](http://www.sgs.com/terms_e-document.htm). Attention is drawn to the limitation of liability, jurisdiction and jurisdiction issues defined therein. Any holder of this document is advised that information contained hereon reflects the Company's findings at the time of its testing and only within the limits of Client's instructions, if any. The Company's sole responsibility is to its Client and this document does not exonerate parties to a transaction from ascertaining all their rights and obligations under the transaction documents. This document cannot be reproduced except in full, without prior written approval of the Company. Any unauthorized alteration, forgery or falsification of the content or appearance of this document is unlawful and offenders may be prosecuted to the fullest extent of the law. All results shown in this test report refer only to the sample(s) tested.



3<sup>rd</sup> Building, No. 889 Yahan Road Xuhui District, Shanghai China 200233  
 中国·上海·徐汇区宜山路889号3号楼 邮编: 200233

4333063  
 E&E (86-21) 61402553 E&E (86-21) 64053679 www.cn.sgs.com  
 HL: (86-21) 61402584 HL: (86-21) 64600363 e.sgs.china@sgs.com  
 0000395500 Member of the SGS Group (SGS SA)



测试报告

No. SHAEC1107022703

日期: 2011年05月19日 第2页,共4页

测试结果:

样品部件外观描述:

样品编号	SGS样品ID	描述
1	SHA11-070227.003	银色金属箔

备注:

- (1) 1 mg/kg = 1 ppm = 0.0001%
- (2) MDL = 方法检测限
- (3) ND = 未检出 (< MDL)
- (4) "-" = 未规定

**RoHS指令2002/95/EC**

测试方法: 参照IEC 62321:2008:

- (1) 用ICP-OES测定铜的含量.
- (2) 用ICP-OES测定铅的含量.
- (3) 用ICP-OES测定汞的含量.
- (4) 用点测试法/紫外-可见分光光度计比色法测定六价铬的含量.

测试项目	限值	单位	MDL	003
铜 (Cd)	100	mg/kg	2	ND
铅 (Pb)	1,000	mg/kg	2	ND
汞 (Hg)	1,000	mg/kg	2	ND
六价铬 (CrVI)	-	-	0	Negative

备注:

- (1) 最大允许限值引用自2002/95/EC RoHS指令和后续修正指令2005/618/EC.
- (2) 点测试法:

Negative = 镀层中未检测到六价铬, Positive = 镀层中检测到六价铬;  
(当点测试结果 Negative 或无法确定时,将采用沸水萃取法作进一步的结果验证.)

沸水萃取法:

Negative = 镀层中未检测到六价铬

Positive = 镀层中检测到六价铬; 表明50 cm<sup>2</sup>面积的被测试样品的沸水萃取液中六价铬的浓度等于或大于0.02 mg/kg.

针对金属表面的防腐涂层: 由于未获知样品的存储条件和生产日期,样品的六价铬测试结果仅代表测试时样品的状态.

This document is issued by the Company subject to its General Conditions of Service printed overleaf, available on request or accessible at [http://www.sgs.com/terms\\_and\\_conditions.htm](http://www.sgs.com/terms_and_conditions.htm), and for electronic format documents, subject to Terms and Conditions for Electronic Documents at [www.sgs.com/terms\\_e-document.htm](http://www.sgs.com/terms_e-document.htm). Attention is drawn to the limitation of liability, jurisdiction and jurisdiction issues defined therein. Any holder of this document is advised that information contained herein reflects the Company's findings at the time of its production only and within the limits of Client's instructions, if any. The Company's sole responsibility is to its Client and this document does not exonerate parties to a transaction from exercising all their rights and obligations under the transaction documents. This document cannot be reproduced except in full, without prior written approval of the Company. Any unauthorized alteration, forgery or falsification of the content or appearance of this document is unlawful and offenders may be prosecuted to the fullest extent of the law. The results shown in this test report refer only to the sample(s) tested.



3<sup>rd</sup> Building, No. 889 Yishan Road, Kuaixi District, Shanghai, China 200233  
中国·上海·徐汇区宜山路889号3号楼 邮编: 200233

TEL: (86-21) 61402553 FAX: (86-21) 64953670 www.cn.sgs.com  
HL: (86-21) 61402584 HL: (86-21) 64600353 e.sgs.china@sgs.com

4333064

0000395500

Member of the SGS Group (SGS SA)



测试报告

No. SHAEC1107022703

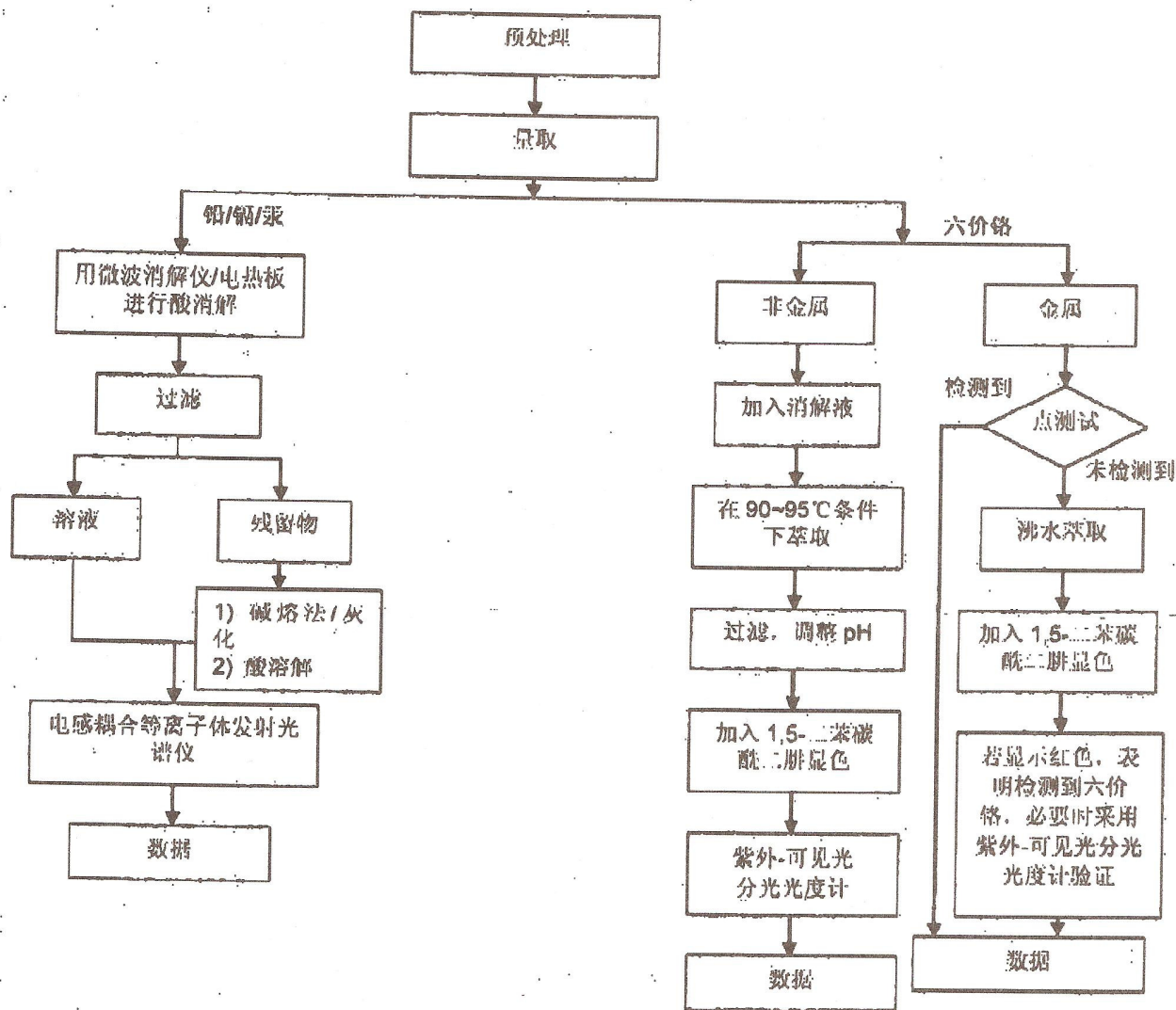
日期: 2011年05月19日

第3页,共4页

附件

RoHS 测试流程图

- 1) 分析人员: 施荷/王彦青/肖飞
- 2) 项目负责人: 张春华/徐亮
- 3) 样品按照下述流程被完全消解 (六价铬测试除外)



This document is issued by the Company subject to its General Conditions of Service printed overleaf, available on request or accessible at [http://www.sgs.com/terms\\_and\\_conditions.htm](http://www.sgs.com/terms_and_conditions.htm) and for electronic format documents, subject to Terms and Conditions for Electronic Documents at [www.sgs.com/terms\\_and\\_conditions.htm](http://www.sgs.com/terms_and_conditions.htm). Attention is drawn to the limitation of liability, jurisdiction and jurisdiction issues defined therein. Any holder of this document is advised that information contained herein reflects the Company's findings at the time of its issue and only within the limits of Client's instructions, if any. The Company's sole responsibility is to its Client and this document does not constitute parties to a transaction. Any unauthorized alteration, forgery or falsification of the content or appearance of this document is unlawful and offenders may be prosecuted to the fullest extent of the law. Results shown in this test report refer only to the sample(s) tested.



3<sup>rd</sup> Building, No. 888 Yishan Road Xuhui District, Shanghai China 200233  
 中国·上海·徐汇区宜山路888号3号楼 邮编: 200233

TEL: (86-21) 61402553 FAX: (86-21) 61402594  
 TEL: (86-21) 64953679 HL: (86-21) 64600363

4333065

[www.cn.sgs.com](http://www.cn.sgs.com)  
[sgs.china@sgs.com](mailto:sgs.china@sgs.com)

0000395500

Member of the SGS Group (SGS SA)



测试报告

No. SHAEC1107022703

日期: 2011年05月19日

第4页,共4页

样品照片:



此照片仅限于随SGS正本报告使用

\*\*\* 报告完 \*\*\*

This document is issued by the Company, subject to its General Conditions of Service printed overleaf, available on request or accessible at [http://www.sgs.com/terms\\_and\\_conditions.htm](http://www.sgs.com/terms_and_conditions.htm) and for electronic format documents, subject to Terms and Conditions for Electronic Documents at [www.sgs.com/terms\\_e-document.htm](http://www.sgs.com/terms_e-document.htm). Attention is drawn to the limitation of liability, jurisdiction and jurisdiction issues defined therein. Any holder of this document is advised that information contained herein reflects the Company's findings at the time of its issue and is valid only within the limits of Client's instructions, if any. The Company's sole responsibility is to its Client and this document does not exonerate parties to a transaction from exercising all their rights and obligations under the transaction documents. This document cannot be reproduced except in full, without prior written approval of the Company. Any unauthorized alteration, forgery or falsification of the content or appearance of this document is unlawful and offenders may be prosecuted to the fullest extent of the law. All results stated in this test report refer only to the sample(s) tested.



3<sup>rd</sup> Building, No. 688 Yishan Road Xuhui District, Shanghai China 200233  
中国·上海·徐汇区宜山路688号3号楼 邮编: 200233

TEL: (86-21) 61402553 FAX: (86-21) 64953679 [www.cn.sgs.com](http://www.cn.sgs.com)  
HL: (86-21) 61402504 HL: (86-21) 64600353 [sgs.china@sgs.com](mailto:sgs.china@sgs.com)

4333066

0000395500

Member of the SGS Group (SGS SA)